

Landis Communities Update December 2, 2020

The message today is one of gratitude and is also a call for strength.

We are grateful that so many of you embraced a different approach to the Thanksgiving holiday weekend – you stayed home, you didn't go out shopping on Black Friday and you found ways to connect with loved ones via Zoom or telephone conversations.

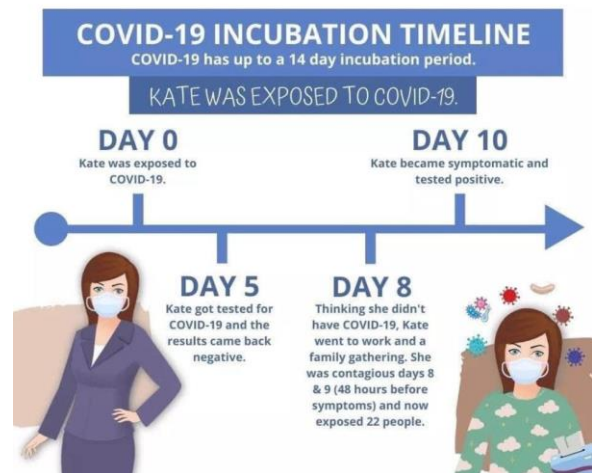
As we start December, we are asking that you stay strong and continue to practice the measures in place to keep yourself, your family members, your neighbors and your friends healthy – wear a face covering, wash your hands and watch your distance to maintain a minimum of six feet from others. A vaccine may be here soon, but this is a critical time.

The cases of COVID-19 continue to surge across the country and in Lancaster County. The Lancaster positivity rate was 12.7% last week, higher than it has been at any time during the pandemic. Across Landis Communities, reports this morning showed 32 team members out for exposure, symptoms or positive cases. The number of resident deaths is now at 10 – six at Welsh Mountain Home and four at Landis Homes. We grieve with the loved ones of these individuals. At Landis Homes, we are aware of 20 people from Residential Living who have been tested in the last two weeks. Six have tested positive, three are pending. Several others have self-quarantined due to exposure.

We understand that it is going to be very difficult throughout the holiday season to not do the things we have come to know and love about this time of year – family meals, Christmas shopping, caroling and concerts to name a few.

This graph tells the story of Kate. Because COVID-19 can have up to a 14-day incubation period, five days after Kate's exposure she received a negative COVID-19 test result. On Day 8 she went to work and a family gathering. On Day 10 she became symptomatic and tested positive. Unfortunately, this story is currently playing out all over the country and we are still bracing to see how Thanksgiving gatherings will drive an increase in cases.

Across Landis Communities, we will be exercising an abundance of caution this holiday season and we encourage you to do the same. Please avoid stores unless you need essential items. Shop online, buy gift cards or give cash gifts this year. Watch concerts from the comfort of your home. And as hard as it is, do not gather with loved ones.



Affiliate Updates

Landis Homes

Residential Living – The uptick of cases in Residential Living along with concern from residents and the desire to exercise an abundance of caution is resulting in several changes:

- **Bus trips** will only be taken to grocery stores and a few other select locations that are following CDC protocols. All others will be canceled.
- **Group gatherings** for social reasons that involve food are being suspended. Dining room service will continue under current guidelines.
- A **Screening Kiosk** has been installed in the wellness center. All residents registered to use the fitness room or pool will sign in using the kiosk or will not be permitted to enter these areas.
- The **Christmas Bazaar** will not be held. Poinsettias will still be available for purchase and food items (ham and cheese sandwiches, potpie and baked goods) will be sold through an order form and pick-up system. Watch your mailbox for details.

The good news is that the COVID-19 Residential Living cases identified to date have all come from outside of campus. Contact tracing has shown no evidence of community spread among apartment and cottage residents. Please continue to maintain your Activity Logs.

Healthcare & Personal Care – Universal testing continues for residents and team members in care areas. No residents have received positive results since last report. Team member testing in Healthcare is now being conducted twice weekly because of the high positivity rate in Lancaster County.

Welsh Mountain Home

Since the start of the outbreak on October 19th, WMH residents and team members have been tested weekly. Six residents have passed away due to COVID-19 complications. Of the others who were ill, all but two residents have returned from Brandywine Hall. All but one of the six team members who tested positive have recovered and returned to work. Each of the last two weeks one person has tested positive. In order to begin reopening there must be two consecutive weeks of zero positive results.

Mountain View Terrace

To our knowledge, there have been no cases of COVID-19 at Mountain View Terrace. Community rooms have been closed to help reduce the opportunities for spread.

Steeple View Lofts

Continues to have no reported cases of COVID-19.

Landis Adult Day Services

Landis Adult Day Services remains closed due to the county positivity rate continuing to be above 10%. One staff person has tested positive for COVID-19 and another is out due to exposure. Other team members are holding virtual ADS on Monday, Wednesday and Friday as well as assisting with testing in healthcare.

Landis at Home

Two caregivers remain in quarantine. No new COVID-19 cases have been reported for caregivers or clients. Landis at Home will soon notify clients of updates to procedures, including encouraging masking of clients in their homes and encouraging clients to have cleaning supplies in their home to allow caregivers to assist in disinfecting high touch surfaces. In addition, a reminder was offered for all clients/families to have an emergency

back up plan in case Landis at Home is not able to reach a client due to winter weather or due to compromised staffing resulting from COVID-19.

Partner Updates

Pathways Institute for Lifelong Learning®

Pathways courses are continuing according to the schedule. Most classes are online, with a very limited number of in-person courses at Landis homes campus. The in-person attendance is very low as most participants opt for virtual courses.

Lancaster Downtowners – are not aware of any positive cases among members.

Friends Life Care – seminars continue virtually. To learn about dates and times for Continuing Care at Home seminars, please visit <https://www.friendslifecare.org/landis/>

In an Op-Ed/Letter to LNP last Sunday, Larry Zook was joined by the CEO's of 12 other retirement communities in sharing thoughts on how to "Help Retirement Communities Facing COVID-19 Surge." The letter is included to this update. It encourages readers to Pray, Act and Engage to support essential workers and help stop the spread of the virus.

Residents, clients and family members may contact Jenny Sheckells with questions or concerns at jsheckells@landis.org or 717.381.3573. You may find other communications and videos on our website: www.landiscommunities.org/COVID

Larry Zook
President/CEO
Landis Communities

Michelle Rassler
Executive Director
Landis Homes

Evon Bergey
Vice President, Community Initiatives
Landis Communities

LNP | LANCASTER, PA

OP-ED/LETTERS

SUNDAY, NOVEMBER 29, 2020 **F3**



LARRY ZOOK
SPECIAL TO LNP

Help retirement communities facing COVID-19 surge

Now that we have just celebrated Thanksgiving, and now look forward to Christmas, many are thinking of things for which they can be thankful.

Our deep and long-lasting relationships with the Lancaster County community are high

on that list for us. Without the involvement of many with ties to this county over the years, this area would not be able to serve so many seniors today.

As you know, the COVID-19 pandemic has affected many people and continues to do so. None of our organizations have

avoided its impact. The largest issue right now is around community spread reaching into our team members' homes. This is leading to several significant issues.

In recent weeks, several of our organizations have been without enough staff to adequately serve residents and clients, leading to leadership teams having to take direct care shifts, the reduction of nonessential services and even the need to bring in agency nursing services, which is incredibly expensive. Adding to that is the cost and time burden of coordinating testing and safety work. Our team members are tired and burning out.

We come to the community today with several specific requests.

— Pray. We ask for prayers not only for those suffering with

COVID-19 and their families, but that our team members, residents and clients will remain healthy. In addition, we ask for prayers that new employees will be found to step into the gaps. This is incredibly important and all of us are in need.

We also ask that you pray that the local, state and federal leaders will listen and learn from those on the front lines and take actions helpful to keeping us safe.

— Act. Please heed the strong message about the vital importance of following the guidance and regulations issued by public health officials. Until we have large numbers of vaccines available, it is critically important to hold onto the tools we have.

Following these health guidelines and wearing masks in public settings are not signs of weakness or lack of faith, but

rather a sign of care and respect for others throughout the larger community.

— Engage. If you have questions on how you can help or ideas for ways we can directly engage with you, please reach out to us.

We are all in this together.

● Larry Zook is president and CEO of Landis Communities. This column is co-signed by the following presidents and CEOs of their respective organizations: Jerry Lile, Fairmount Homes; David Shenk, Tel Hai Retirement Community; Steve Lindsey, Garden Spot Communities; John Sauder, Mennonite Home Communities; Cliff Hurter, Calvary Fellowship Homes; Douglas Motter, Homestead Village; Robert Hayward, Quarryville Presbyterian Retirement Community; Jonathan Hollinger, Pleasant View Retirement Community; John Snader, Brethren Village; Carl McAloose, Luthercare; David Swartley, Moravian Manor; and Sue Verdegem, United Zion Retirement Community.